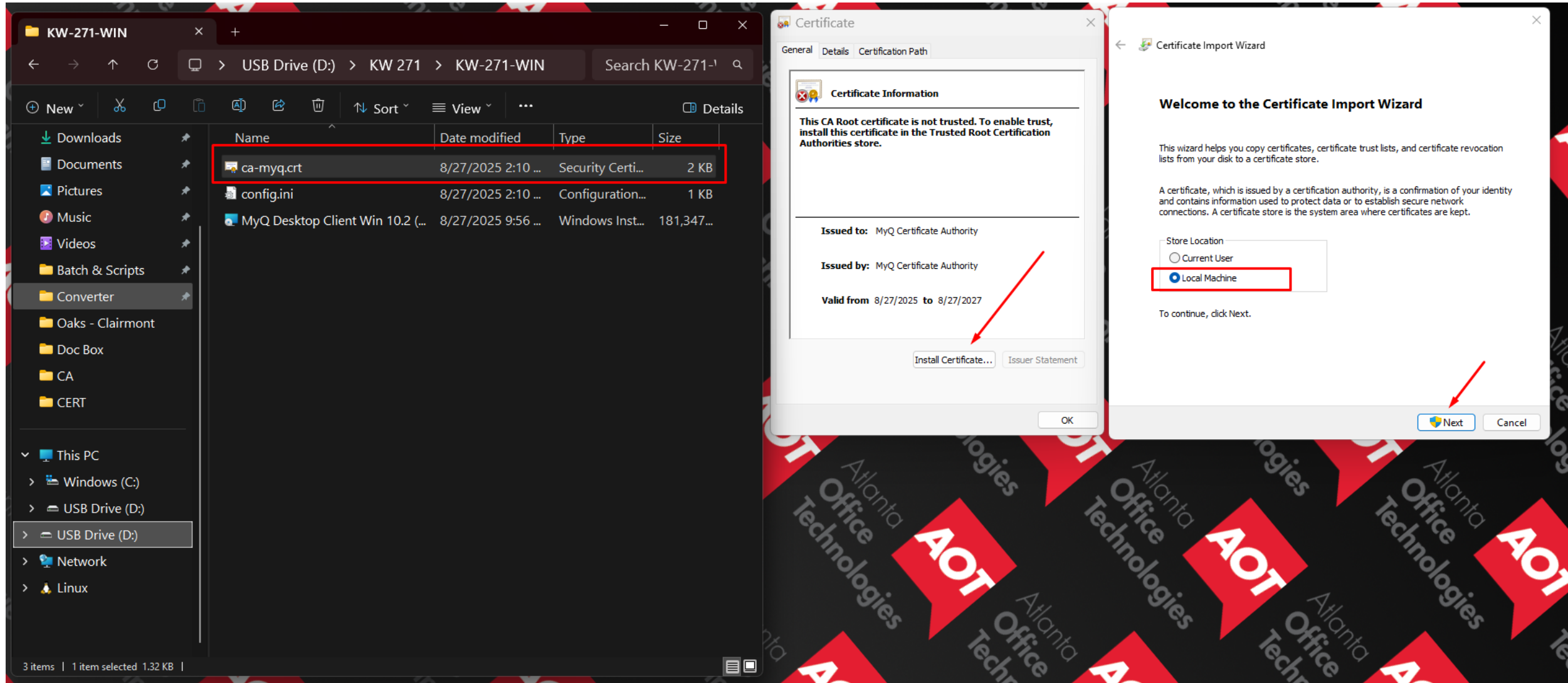
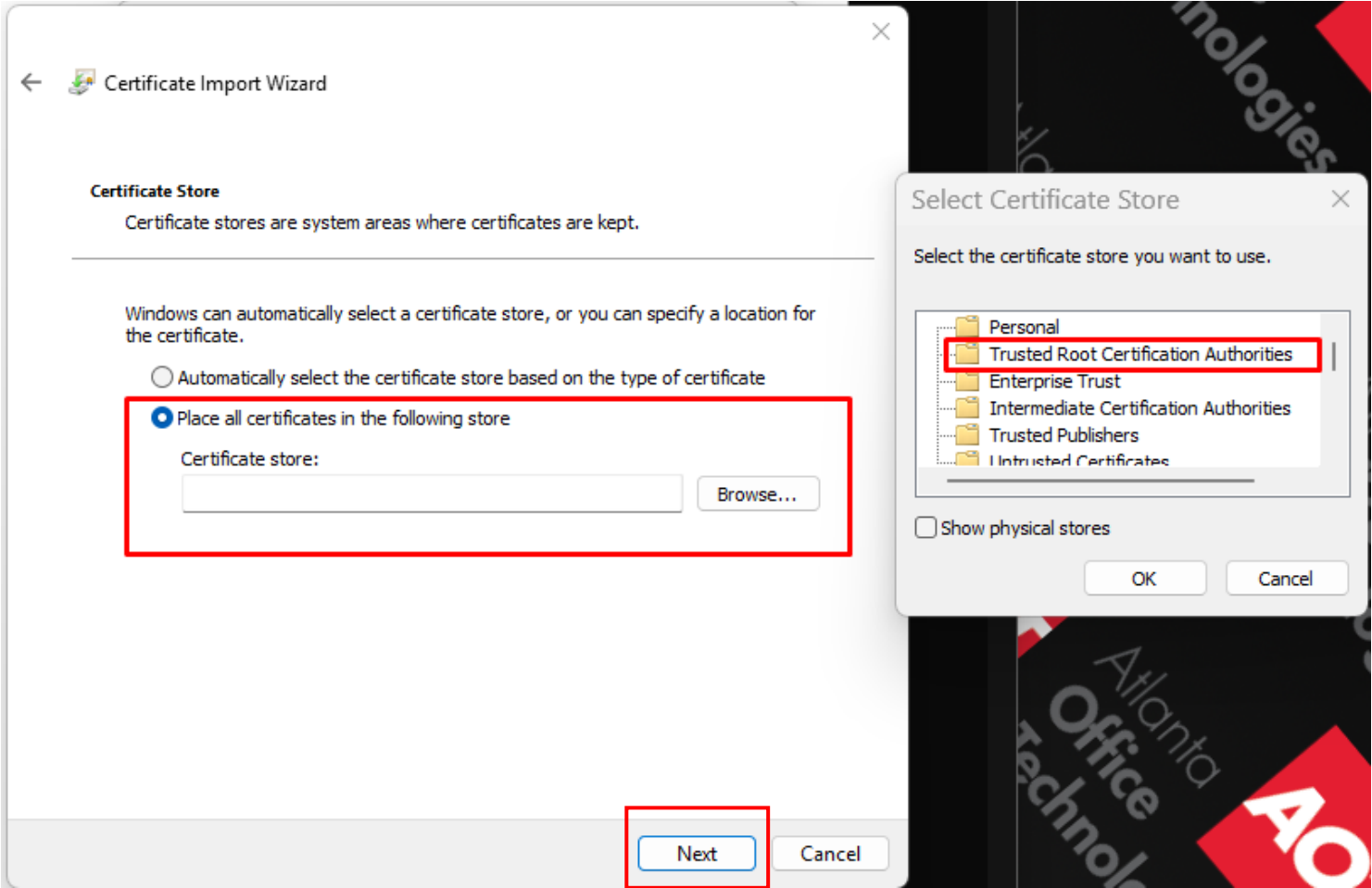
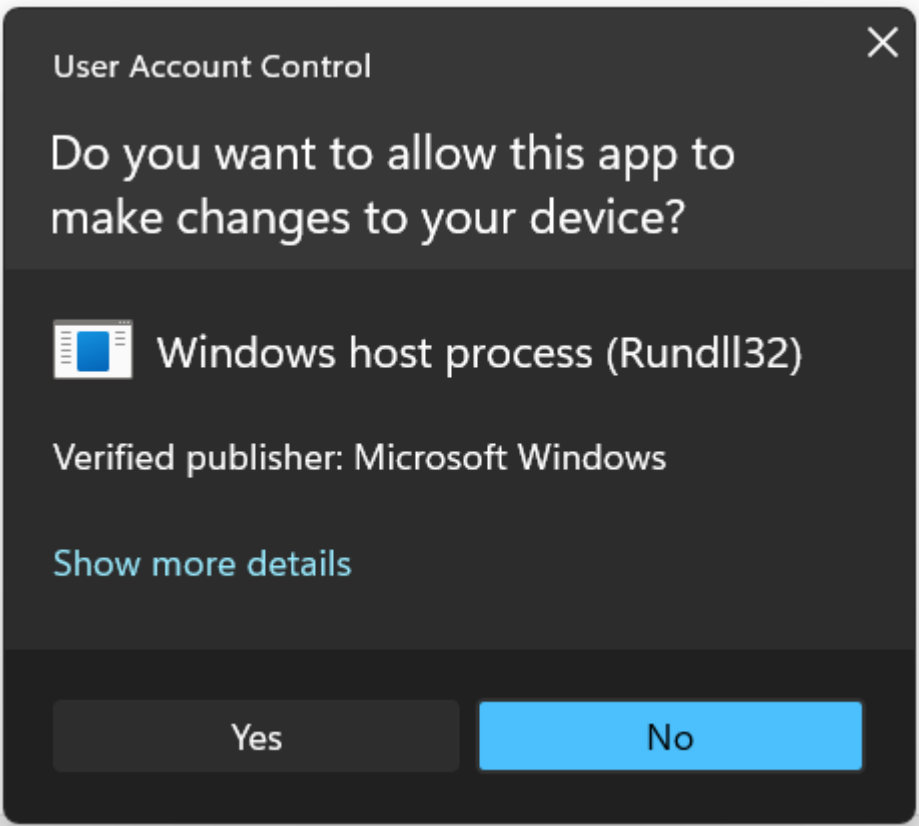


Install the Certificate, Open the window, choose install, change to Local Machine, then click Next



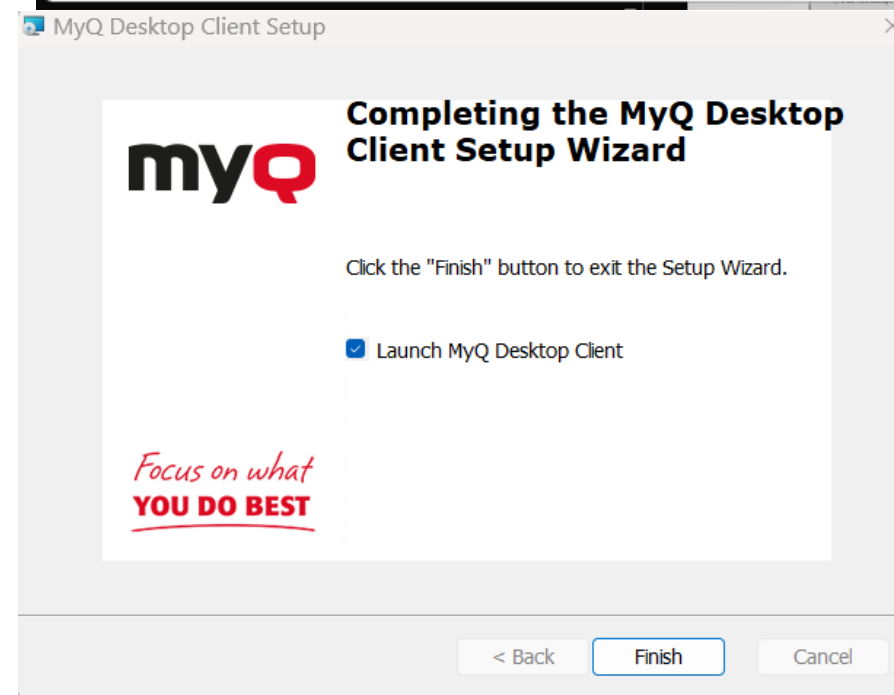
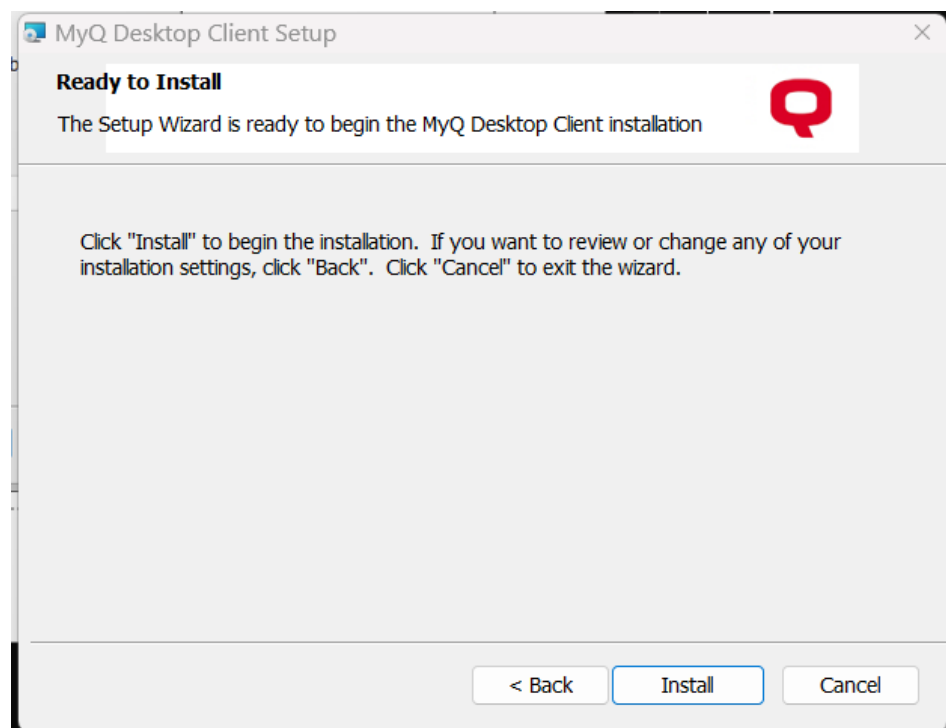
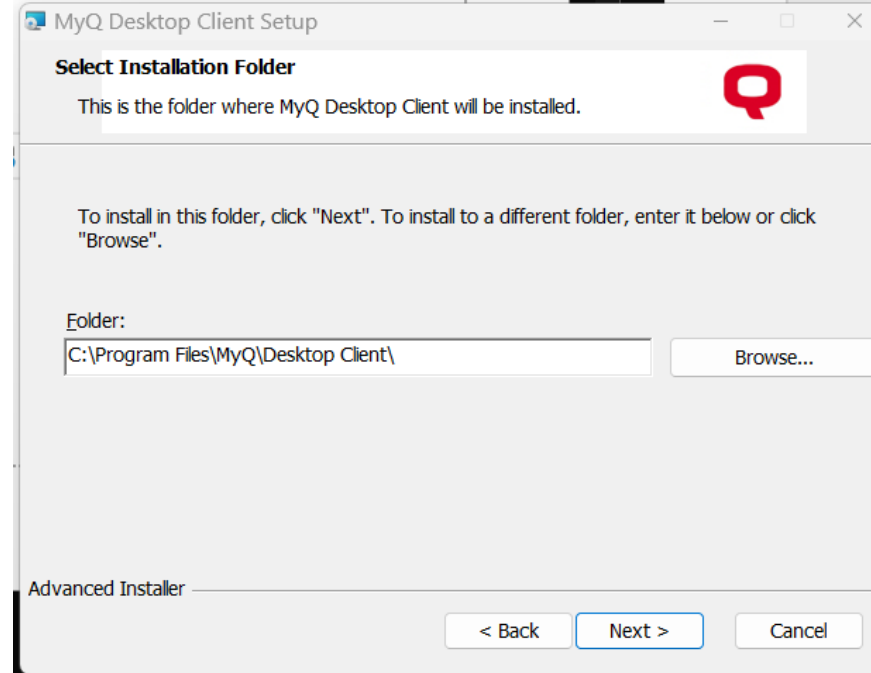
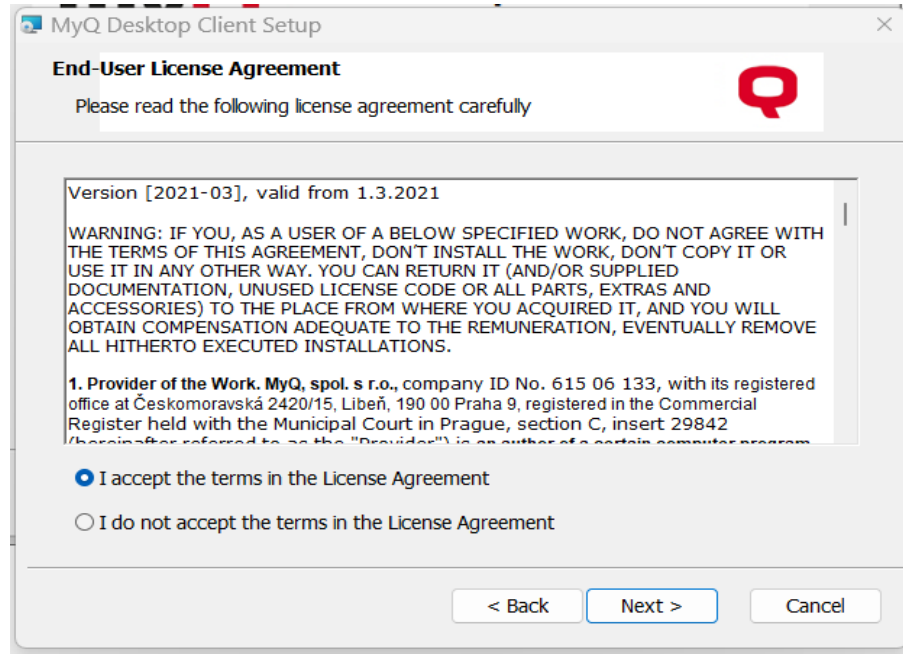
Choose Yes on the Window.

In the window, choose Place all certificates in the following store, then choose browse. Select Trusted Root Certification Authorities. Press ok, then click Next, Then click finish

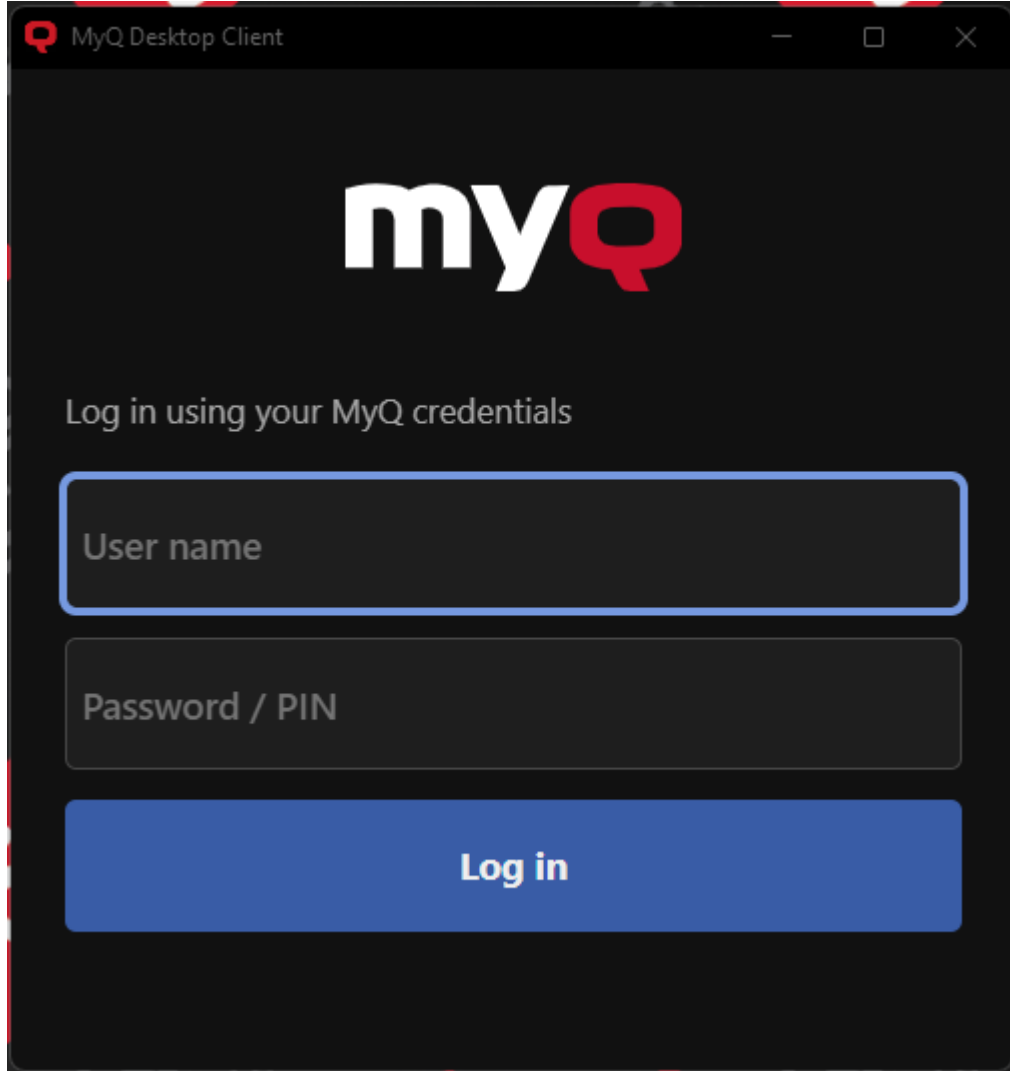


Run the MyQ Desktop Client installer. Leave the defaults in the installer and choose next until you install. Once finished click Finish





Once finished MyQ should pop up asking you to log in, Once logged in the installer will setup the printer. To print going forward you will use the “KWPR-AGENT-PRINTER” from the print list.

The image shows a screenshot of the MyQ Desktop Client application window. The window has a dark gray background. At the top left, the title bar says "MyQ Desktop Client" with a small red MyQ logo icon. In the center, the "myQ" logo is displayed in white and red. Below the logo, the text "Log in using your MyQ credentials" is shown in a light gray font. There are two input fields: the first is labeled "User name" and is highlighted with a blue border; the second is labeled "Password / PIN". Below these fields is a blue button with the text "Log in" in white. The window also features standard Windows window controls (minimize, maximize, close) in the top right corner.

MyQ Desktop Client

myQ

Log in using your MyQ credentials

User name

Password / PIN

Log in